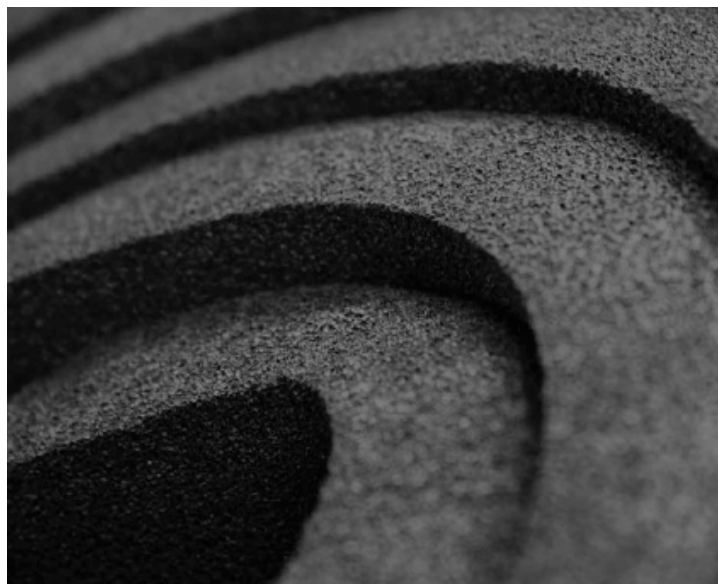


ELIT TECH ACOUSTIC DATA

ElitTech is a highly modified flexible open-celled polyurethane foam.

Used as an acoustic sound absorber offering excellent absorption characteristics, especially in the troublesome low frequencies, whilst achieving the highest possible fire resistance ratings for a flexible acoustic foam. ElitTech is a chemically inert product that will not dust or migrate, even when subjected to high-velocity airflows. Tested at 10000 fpm for 4 hours. ElitTech also has the ability to act as a membrane absorber across the full frequency spectrum when specified with the correct material thickness & choice of facing. High mass ensures ElitTech gives excellent damping performance when applied to rigid substrates, greatly improving sound breakout.



TECH SPECS

STANDARD SIZE ROLL

1200mm x 2000mm x 50mm

1200mm x 1000mm x 50mm

MAX: 1200mm x 2000mm x 100mm

FEATURES AND BENEFITS

- Highly flame retardant
- Mold resistant
- Easy to cut on site
- Targets low frequencies

FIRE SPECIFICATION

EN 13501-1 EURO CLASS B-s1,d0

BS 476 PART 6/7 CLASS 0

COMPOSITION Impregnated PU Foam

CUTTING TOLERANCE +/- 5mm

DENSITY 90KG M3

OPERATING TEMPERATURE -30C to 100C

ASTM C1071-05 12.7 Pass

FUNGUS RESISTANCE Excellent

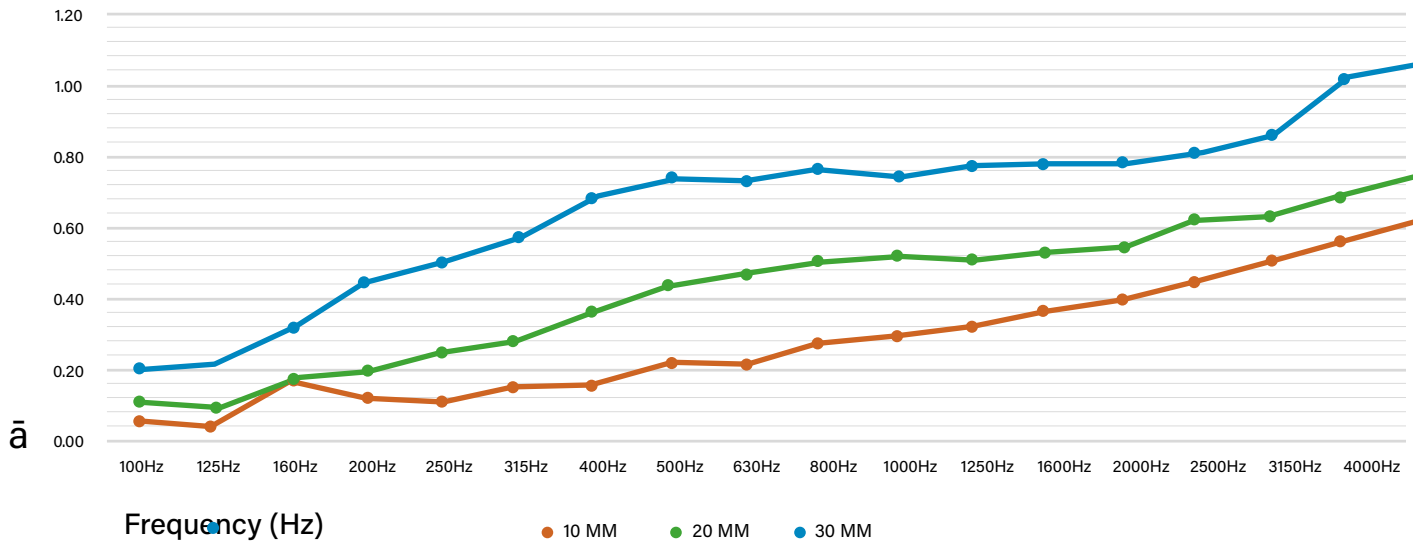
THERMAL CONDUCTIVITY 0.32 Btu-in/ft2-hroF

WATER VAPOUR ASTM C1104-06 - <9%

COLOUR Dark Grey, Anthracite

ELIT TECH ACOUSTIC DATA

Elit Tech Acoustic Data



Sound absorption @ 10mm (Random Incidence) NRC > 0.27

Sound absorption @ 20mm (Random Incidence) NRC > 0.42

Sound absorption @ 30mm (Random Incidence) NRC > 0.67